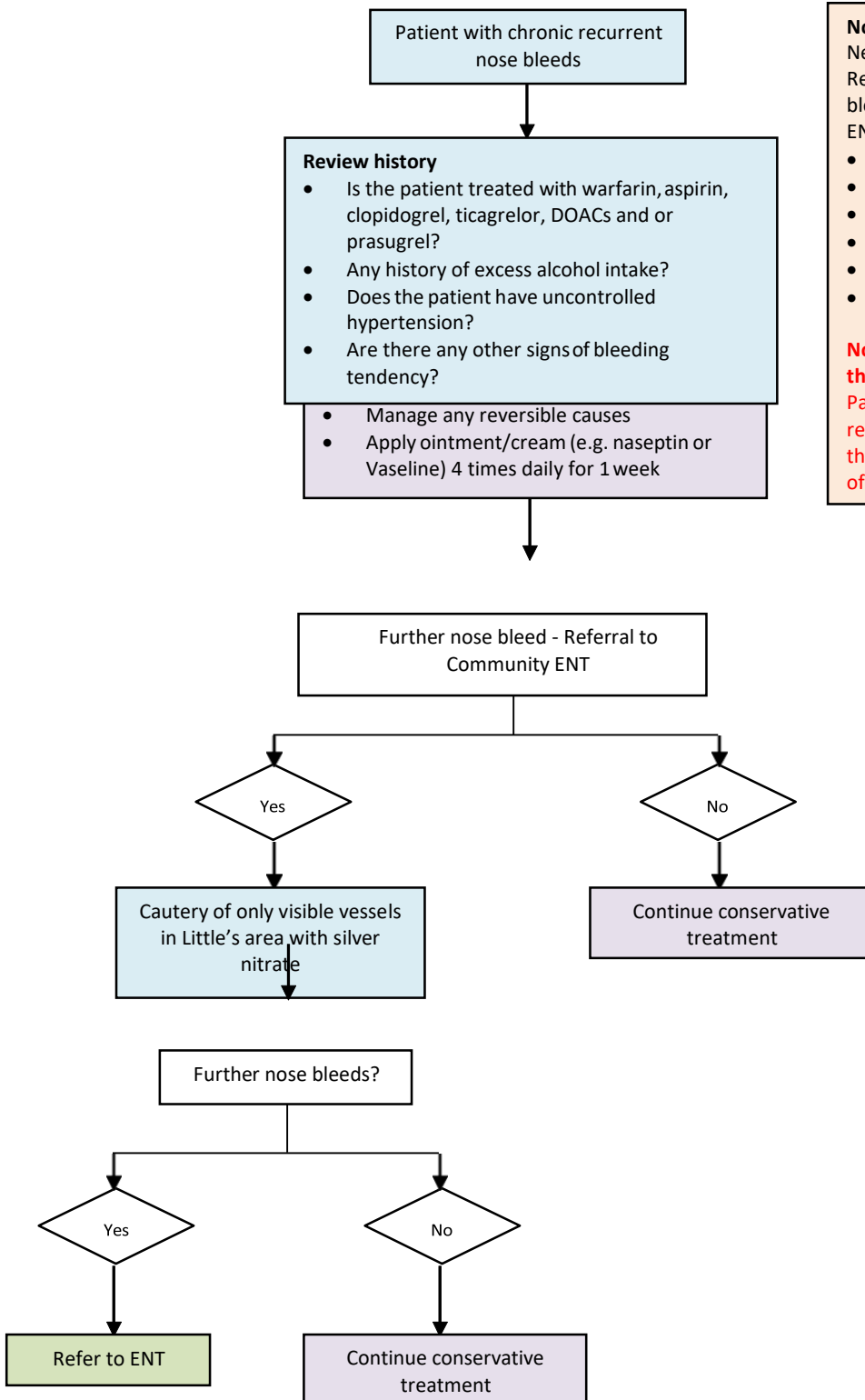


Chronic Recurrent Nose Bleeds



Notes
 Neoplasm is very rare.
 Red flags in patients with recurrent nose bleeds, requiring urgent referral onto 2ww ENT pathway:

- Facial pain/swelling
- Otagia
- Unilateral nasal obstruction
- Reduced sense of smell
- Visual symptoms
- Dental symptoms

Nose bleeds can be serious and life threatening.
 Patient who have had serious prolonged, recurrent nose bleeds should be given the information leaflet about prevention of nose bleeds.

